

RIF. 13896 - PRICE: € 76.000 - MQ 15

Sanremo C.so Imperatrice, garage with appurtenant boxes, with a total of 86 boxes. At an urban level, the site falls within one of the most central city contexts, known for its high quality both in terms of landscape and environment, and architecture, namely the area of the Grand Hotels of the late nineteenth - early twentieth century, built in Eclectic style with Liberty-type decorative elements. The garage is completely buried within the two terraces and its existence is perceptible externally only due to the presence of the two entrances and exits. It is spread over three floors of identical shape and extension and an overlying fourth level of significantly smaller dimensions. Multiple boxes still available. For information on site visits and availability contact us

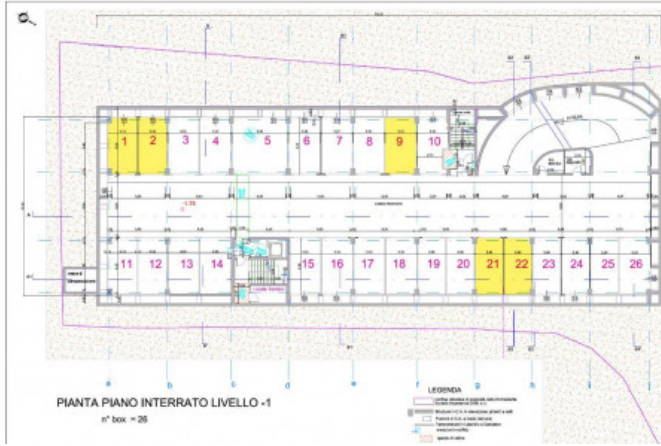
MORE DETAILS



Riferimento: 13896
Prezzo a partire da: €
76.000

Superficie: mq 15
Locali: 1

RATO -1



RATO -2



DETAILS

Immobile nuovo
Condizioni: Ottimo

Età Costruzione: 2025